

## A new genus and species of Tortricidae (Lepidoptera) from Africa

Leif Aarvik

Aarvik, L. 2004. A new genus and species of Tortricidae (Lepidoptera) from Africa. *Norw. J. Entomol.* 51, 67-70.

*Sambara sinuana* gen. nov., sp. n. from Tanzania, eastern Africa, is described. It belongs in the subfamily Olethreutinae and displays characters of both the tribe Olethreutini and Eucosmini.

Key words: Lepidoptera, Tortricidae, Olethreutinae, new genus, new species.

Leif Aarvik, Zoological Museum, University of Oslo, P.O. Box 1172 Blindern, NO-0318 Oslo, Norway. E-mail: leif.aarvik@nhm.uio.no

### INTRODUCTION

The fauna of Microlepidoptera of tropical Africa has been little studied. The number of undescribed genera and species is high, and most described species are misplaced in European genera. The author has begun the study of the taxonomy of African Tortricidae. Among specimens of this family borrowed from the Zoological Museum, University of Copenhagen (ZMUC), two males belonging to an apparently undescribed genus were discovered. The new genus and species is described below. The material was collected at light in 1995 in Mazumbai Forest Reserve, Western Usambara Mountains, eastern Tanzania.

The Usambara Mountains is a part of the Eastern Arc (Wasser & Lovett 1993), a disjunct range of ancient crystalline mountains in southeastern Kenya and eastern Tanzania. The forests of these mountains was characterised as a hot-spot by Myers (1990), indicating that they feature exceptional concentration of endemic species (Myers 1988). Today only fragments remain of the rain forests of the Usambaras. The tortricid described in the present paper is a striking addition to the threatened fauna of this area.

### METHODS AND TERMINOLOGY

After maceration the genitalia were dissected under a stereoscopic microscope and embedded in euparal on a glass slide. Photos of the genitalia were taken using a Leica DC 200 digital camera. The digital images were manipulated with Adobe Photoshop 6.0. The colour figure of the moth was obtained by projecting a dias photo on paper, and then the contours of the moth, including wing pattern, were painted on the paper. Subsequently all details were painted by comparing with the specimen under a stereoscopic microscope.

The terminology of the pattern elements in the forewing, venation and genitalia is the one used in standard taxonomic works on Tortricidae, e.g. Razowski (2004).

### SYSTEMATICS

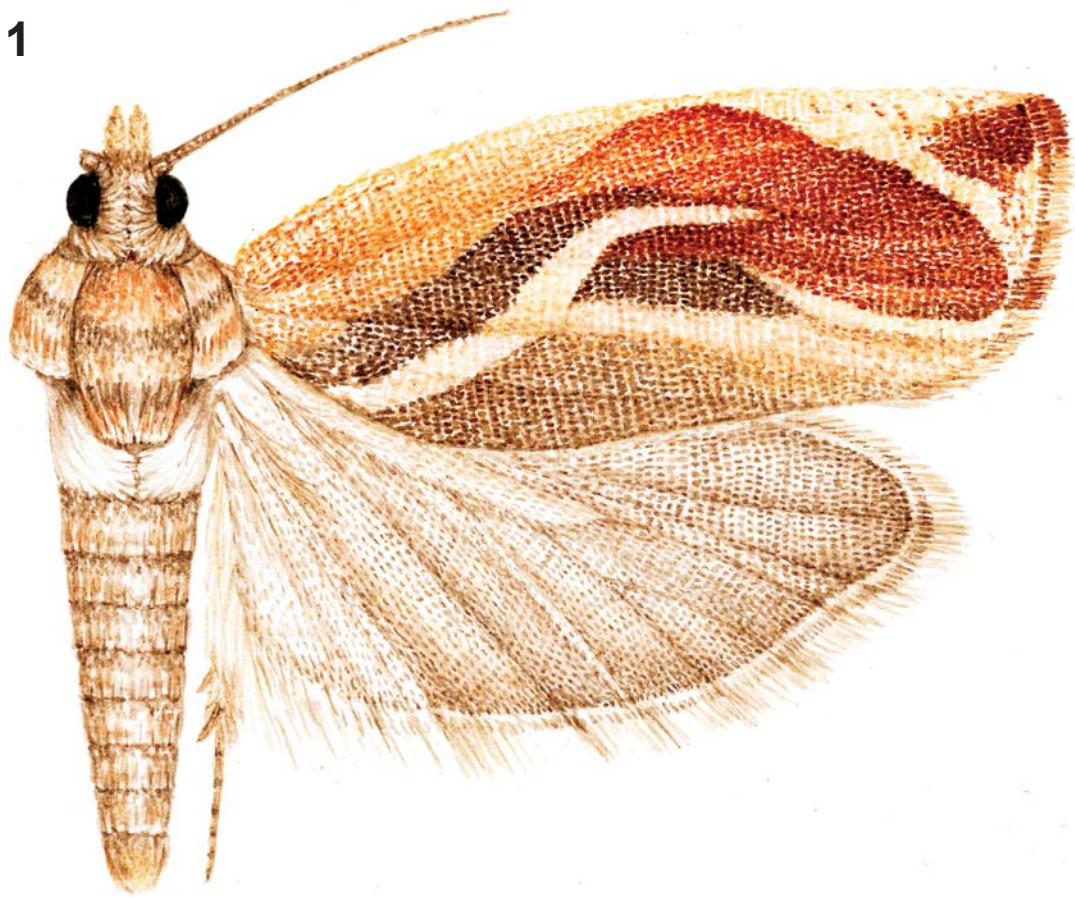
#### *Sambara* gen. nov.

Type species: *Sambara sinuana* sp. n.

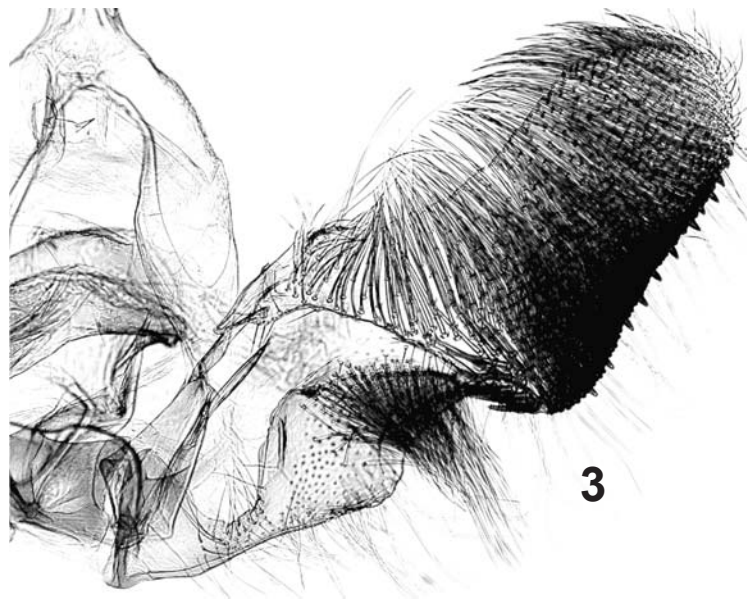
#### *Description*

Labial palp twice the diameter of eye; head rough scaled; antennae fasciculate. Thorax posteriorly with double crest. Hind tibia (Figure 2) with oval plate of sex-scales, inner surface with pencil of

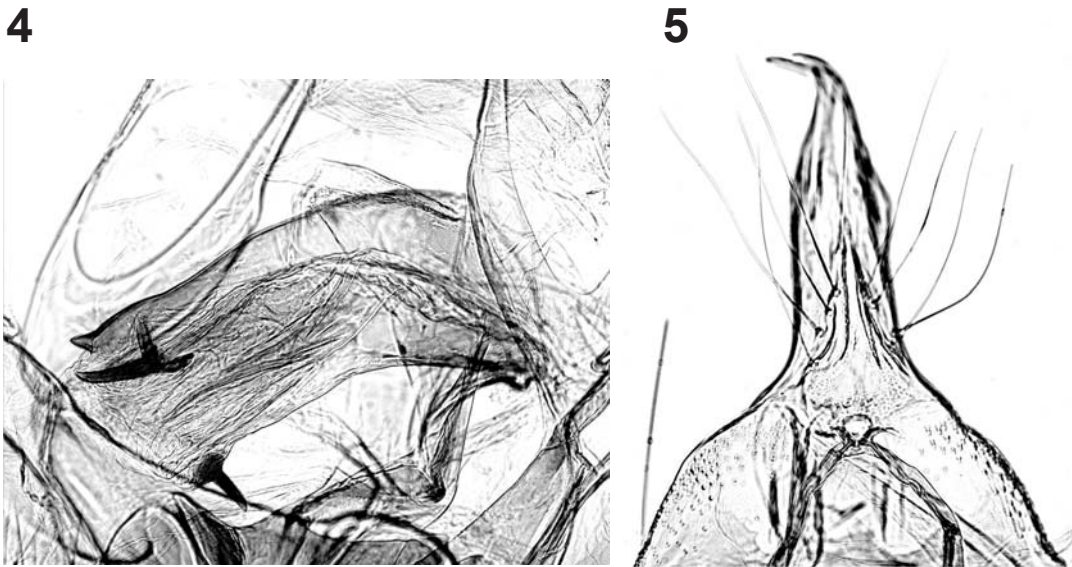
1



2



3



**Figures 1-5.** *Sambara sinuana* gen. nov., sp. n. 1. Adult. 2. Hind leg. 3-5. Male genitalia. 3. Right valva and part of tegumen. 4. Aedeagus. 5. Uncus and upper part of tegumen.

hair-scales reaching from base to two thirds. Hind wing with anal fold in which the scale tuft of the hind tibia fits; vein  $M_3$  and  $CuA_1$  on common stalk. Costal strigulae in forewing are lacking.

Male genitalia. Uncus (Figure 5) basally with long setae, otherwise naked, narrowing in distal third, apex bifurcate; socii absent; lower edge of valva (Figure 3) excavated before cucullus, with tuft of strong setae below basal excavation; lower edge of basal excavation medially with small triangular thorn; cucullus basally with group of strong spines, lower edge slightly concave, this edge with short spines; aedeagus (Figure 4) broad, distally pointed, with two nail-shaped cornuti of different size.

#### ***Sambara sinuana* sp. n.**

*Type material:* Holotype male, Tanzania: Tanga Region, Lushoto Distr. 1400 m. Mazumbai Forest Reserve, 30.xi-7.xii.1995, S. McKamey et al., genital slide Aarvik 23025, coll. ZMUC.

Paratype 1♂ as holotype (not dissected), coll. ZMUC.

#### ***Description***

Male (Figure 1). Wingspan 18 mm. Forewing basally light reddish brown, along costa becoming almost white in distal half; a large brownish red area extends towards tornus from the upper portion of the central part of wing; a patch of this colour is also present in apical area; a sinuous whitish band goes from base of dorsum to 2/3 of wing length; the whitish band is edged with dark brown above; a dark brown patch is also present in the middle of the wing; a whitish band extends from just above tornus towards the tip of the sinuous band; a whitish band from costa to termen isolates the apical spot from the rest of the pattern. Hindwing brownish grey.

Male genitalia. See genus description.

#### ***Etymology***

The genus name is derived from “Usambara”, the name of the mountains where the moths were collected. The species name refers to the sinuous line in the forewing.

## SYSTEMATIC POSITION OF SAMBARA GEN. NOV.

The very characteristic forewing pattern of *Sambara sinuana* sp. n. is unique among members of the subfamily Olethreutinae, in particular the lack of costal strigulae is peculiar. The presence of costal strigulae is a ground plan character of the subfamily (Horak 1999). Tribal assignment of *Sambara* gen. nov. is difficult. The hind wing with veins  $M_3$  and  $CuA_1$  stalked, as well as the male genitalia with their bifurcate, unspined uncus and the shape of valva speak for the inclusion in Eucosmini. The presence of a tibial scale tuft, on the other hand, is a character typical for the tribe Olethreutini. The forewing pattern indicates placement in Olethreutini rather than Eucosmini. As in *Rhodotoxotis* Diakonoff, 1992 the male genitalia lack socii. *Rhodotoxotis*, distributed in tropical Africa and Madagascar, could be the sister genus of *Sambara* gen. nov. *Rhodotoxotis* has a wing pattern resembling *Sycacantha* Diakonoff, 1959 (in Olethreutini) (Diakonoff 1992). Diakonoff (1992), however, placed *Rhodotoxotis* in Eucosmini. In the male genitalia *Sambara* gen. nov. differs from *Rhodotoxotis* by its long uncus and short and truncate aedeagus. The discovery of the female of *Sambara sinuana* sp. n. would probably shed some light on its taxonomic position.

**Acknowledgements.** I thank Ole Karsholt, Copenhagen, for lending me the African Tortricidae kept in the Zoological Museum, Copenhagen (ZMUC). My wife, Nini Cecilie Aarvik, is thanked for executing the beautiful water-painting of the new species. I am grateful Lars Ove Hansen, Oslo, is thanked for technical assistance. I also thank the Entomological Department at the Zoological Museum, Oslo, by the curator Jan Emil Raastad, for financing the printing of the colour plates. I finally thank an anonymous referee for constructive comments to the manuscript.

## REFERENCES

- Diakonoff, A. 1992. Tortricidae from Madagascar. Part 2. Olethreutinae, 7. Annl. Soc. ent. Fr. (N.S.) 28, 37-71.
- Horak, M. 1999. The Tortricoidea. Pp. 199-215 in Kristensen, N.P. (ed.), Lepidoptera, Moths and Butterflies. Vol. 1: Evolution, Systematics, and Biogeography. Handbuch der Zoologie. Band IV, Teilband 35. Walter de Gruyter. Berlin, New York.
- Myers, N. 1988. Threatened biotas: 'hot spots' in tropical forests. *The Environmentalist* 8, 187-208.
- Myers, N. 1990. The biological challenge: extended hot-spots analysis. *The Environmentalist* 10, 243-256.
- Razowski, J. 2004. Tortricidae of Europe. Vol.2: Olethreutinae. 301 pp. Frantisek Slamka, Bratislava.
- Wasser, S.K. & Lovett, J.C. 1993. Introduction to the biogeography and ecology of the rain forests of eastern Africa. Pp. 3-7 in Lovett, J.C & Wasser, S.K. (eds.), *Biogeography and Ecology of the Rain Forests of East Africa*. Cambridge University Press, Cambridge.

Received 14 February 2004,  
accepted 1 April 2004